

AUTOMOTIVE

OMIA.FR

FRENCH MADE

**LUXIA 700 S**



SPRAY PAINTING  
BOOTH (for LV or LCV)



DESIGN - TECHNOLOGIES - INNOVATION

# LUXIA 700 S

LV or LCV SPRAY PAINTING BOOTH

Designed and thought out  
for your bodyshop



Model shown with optional lower level lighting



# A **MODERN** and **INNOVATIVE** design



IRC 85% high resolution lighting – daylight tubes in IP 54 sealed casing with electronic ballasts. Electrical consumption reduced by 25%. Restitution 1400 lux for 45 tubes. Instantaneous switching on. LED backlit panel (optional).



Insulated sandwich panels enclosure – ISOLPAX concept : rock wool medium.



Fully integrated safety and control gas manifold in compliance with EN 746-2.



Direct flame gas burner process. Flow rate controlled by motorised valve. 100% efficiency.

Swinging filter frames with self-holding

Distribution duct with anti-vibration bellows provided with multi-directional ventilation deflectors.

Prefiltration compartment with honeycomb pockets



Main door with double glazing and tempered glass

Reinforced rigid enclosure framework

Blowing and extraction units (ATEX Zone 2) high efficiency – controlled by progressive starters. High efficiency IE3 motors.



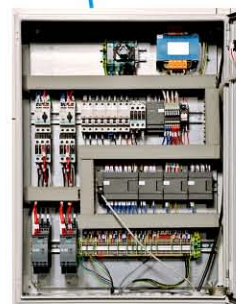
Galvanised gratings – optimum cross section with integrated flow distributors and filtration with high retention capacity.



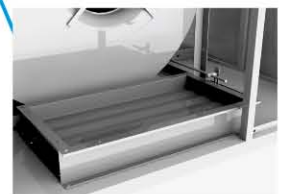
Ergonomic opening by Push-Pad.



Control unit with intuitive touch screen.



Power box managed by PLC.

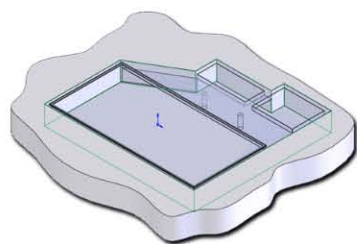


Automated recycling flaps in operation during baking phase.

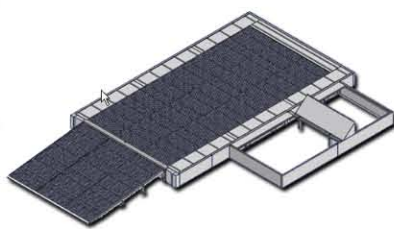




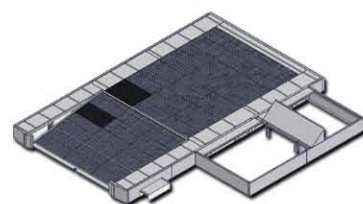
DESCRIPTION	STANDARD	OPTIONS
Dimensions	L = 7 m W = 4 m H = 2,80 m	H = 3,36 m
Ventilation & power	Vertical ventilation Blowing air flow = 34 000 m <sup>3</sup> /h Extraction air flow = 34 000 m <sup>3</sup> /h Blowing and extraction motors = 2 x 7,5 kW	
Implantation	Civil engineering	Raised metal base with exterior fixed access ramp or interior pneumatic mobile ramp.
Machinery configuration	Right / left	Rear / aerial
Enclosure	White prepainted and insulated lined panels High density rock wool	
Lighting	30° inclined top lighting 8 blocks with 3 tubes of 36 W	Horizontal lower lateral level / corner lighting / LED backlit panel version (75 W)
Main door	2-leaf door with <b>panoramic windows</b>	3-leaf door with <b>panoramic windows</b>
Gratings	Galvanised - 18 m <sup>2</sup> Load 600 kg/wheel	Reinforced floor (Light Vehicle) Load 1 000 kg/wheel
Heating	Direct combustion with direct flame burner 300 kW	
Control	PLC management with 9" intuitive touch screen	
Process	Energeco Energia Report	Pack ECO (air flow variation) Hygro control



Civil engineering



Fixed ramp



Mobile ramp

# HIGH-TECH innovations



## // PROCESS



**ENERGECO**

"Matting" phase between layers by air recycling in closed circuit. Adjustable temperature.

**Time saving : 22%**  
**Running cost : -34%**  
**Productivity : + 1 vehicle/day**



**AEROSPEED**

Optimised and directional flaps for better incoming/outgoing air flows.

**Motor intensity reduction**  
**Air flow booster**



**AIR TOUCH**

Control unit with 9" intuitive and friendly touch screen. Management by PLC, automated functions, browsing icons, customizable settings.

**Ergonomics**



**ISOPHONIA**

Global acoustic treatment ensuring comfort for the paint operator with less than 75 dB(A) inside the booth.

**Operator comfort**



**REGUL'PRESS**

Guarantee of constant pressure in booth provided by 5 digital sensors. Continuous analysis : clogging of the 3 levels of filtration and cabin pressure.

**Safety**



**ISOLPAX**

Innovative panel concept with self-centred fitting consisting of heat-insulated lining : rigid high-density rockwool (40 mm).

**Energy cost saving**



**ENERGIA  
REPORT**

Indication on the touch screen of the energies cost/vehicle repair.

**Control of energy costs**



**PACK ECO**

Automatic ventilation control according to operational phases.

Variable frequency drives on motor.

**Energy savings**

(Optional)



**PROTECT'  
PLANETE**

Selection of materials and components that are more than 90% recyclable : greenhouse gas emissions reduction thanks to the energy saver process.

**Environmentally friendly**



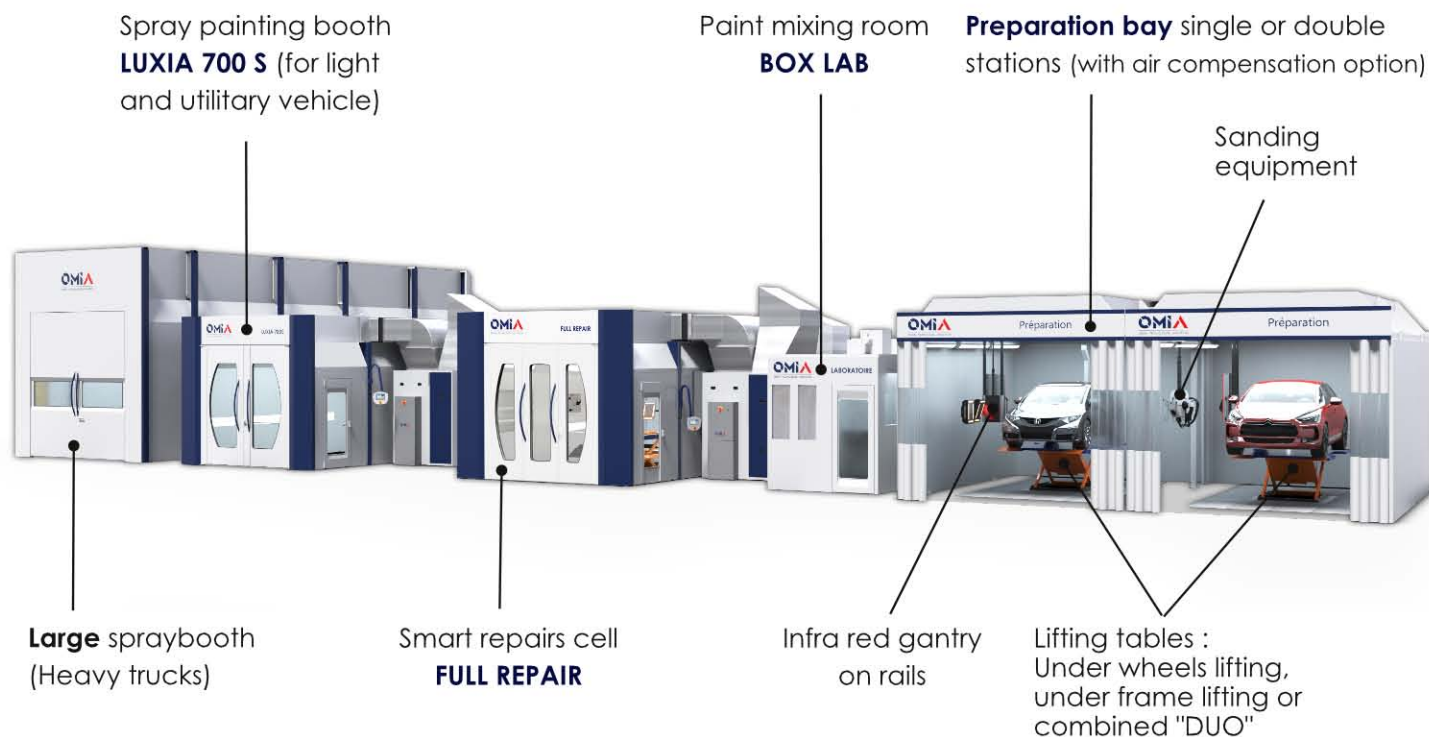
**HYGRO  
CONTROL**

Booth humidity management : permanent indication on the touch screen of the relative humidity level in the booth. Automatic burner control.

**Control of energy costs (Optional)**



# Other bodyshop equipment



## // AFTER-SALES SERVICES



Our network of authorized importers ensures this mission

**Tel. +33 545 205 151**

- Troubleshooting and technical assistance by HOT-LINE
- Commissioning
- Maintenance
- Spare parts supplies
- Consumables supplies



DESIGN - TECHNOLOGIES - INNOVATION

ZI N°3, 66 avenue Maryse Bastié,  
16340 L'ISLE D'ESPAGNAC, France  
+33 (0)5 45 20 51 51 // [omia@omia.fr](mailto:omia@omia.fr) // [www.omia.fr](http://www.omia.fr)